



# SURYA WORLD™

Institutions of Academic Excellence



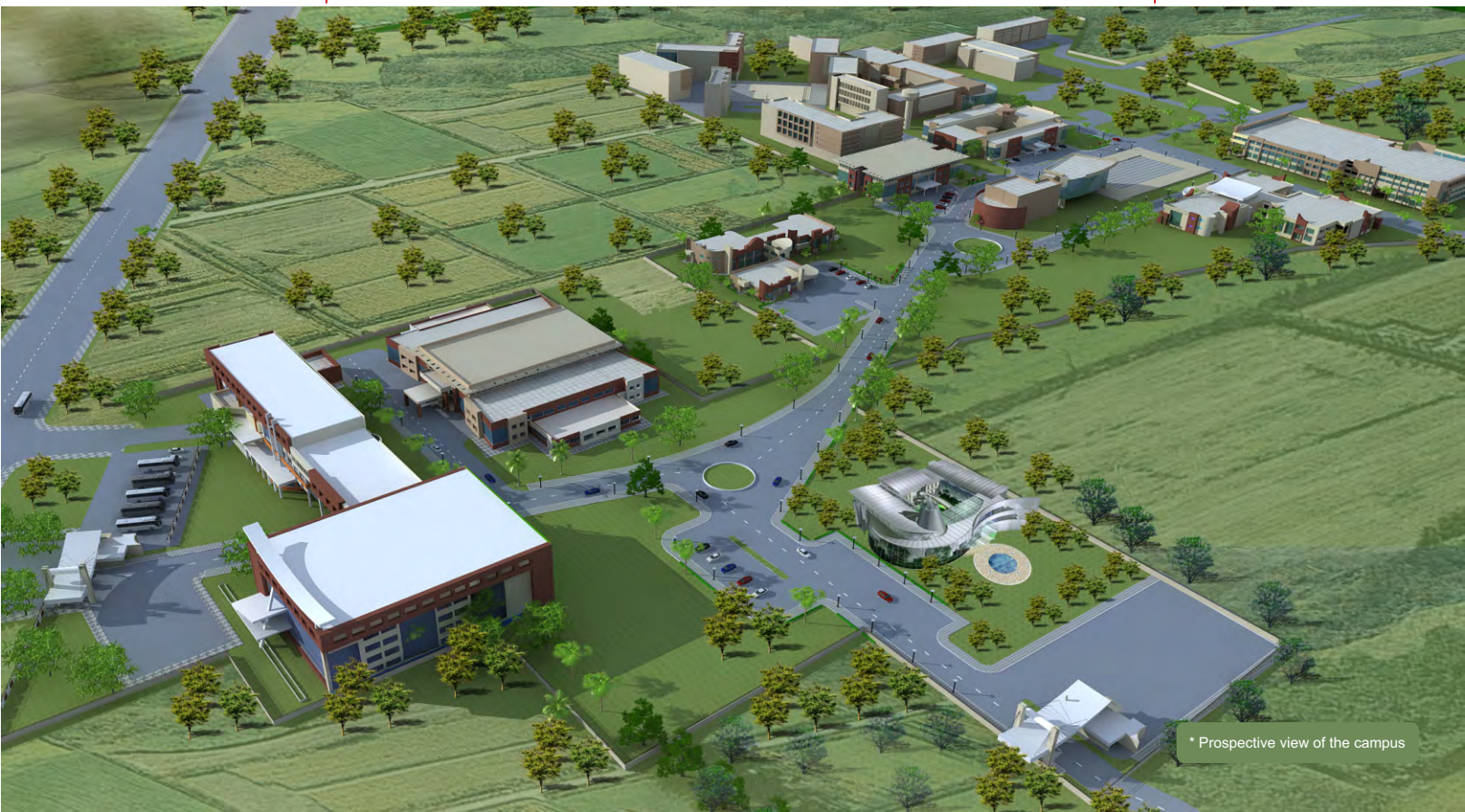
# About Us

Established under the aegis of Surya World Educational Research & Charitable Initiative (SWERCI), Surya World- Institutions of Academic Excellence, is an initiative of Surya Pharmaceutical Limited, a Fortune India 500 company. These institutes of higher education are approved by AICTE, COA, PCI, Government of Punjab and are affiliated to Punjab Technical University and Punjabi University.

Surya World offers an integrated curriculum that is designed towards delivering quality tertiary education with the highest standards of instruction, thereby, equipping the students with the requisite knowledge and skills to perform effectively in a dynamic industry environment.

Ideally located on the Rajpura-Ambala section of the National Highway (NH-1), 45 kms from Chandigarh, the 50 acre campus with state-of- the- art infrastructure and facilities, provides perfect balance between academic excellence and extra co-curricular activities.

## India's largest technical integrated campus



\* Prospective view of the campus



# Campus Life

- World class infrastructure with state-of-the-art facilities
- Wi-Fi enabled campus and smart card access
- Air-conditioned interactive classrooms
- On line student portal - My Campus
- Air-conditioned hostels for boys and girls with all facilities
- Modern hygienic mess and catering facilities
- Library with 30,000 books, 2,00,000 e-books & 8,000 e-journals
- Modern fully equipped Gymnasium and Sports Complex
- Medical facilities - pharmacy and dental clinic
- Tuck-shop catering to everyday needs and necessities
- GPS & LCD fitted AC buses for transportation
- 24 hour ATM facility
- Located amidst a green and pollution-free environment
- Strategically situated on National Highway No. 1





## Why SURYA WORLD ?

- Surya School of Business Management ranked 'Best Promising Upcoming B-School in India' – Business & Management Chronicle 2011
- Surya World Institution of Academic Excellence titled 'North India's Best Provisioned Integrated Campus' – Curriculum: The India Education Landscape Update, Feb, 2012
- 100% placements of the 1st batch of MBA students in top industries and in the group companies of Surya Corp
- **PEARSON** UK based global leader in education & publishing and providing content to leading US Universities, as Knowledge Partner for curriculum enhancement
- Memorandum of Understanding with Scotland's Colleges International, UK for joint delivery of framing technical training, vocational & professional skills
- Highly qualified, experienced & dedicated faculty
- Personalized attention to students; teacher student ratio being 1:10
- Practical/industry oriented teaching methodology
- Focus on Personality Development, Training and Placement
- Specially designed Executive Excellence Program and Finishing School to enhance employability skills
- Students from different fields brought together and mentored to become entrepreneurs
- To promote entrepreneurship, Surya Corp would invest Rs. 5 Lakhs as equity for a business idea presented by MBA students, subject to approval of the Management

# Courses offered

All courses have 10% free seats for meritorious students from economically weaker sections as per Punjab Govt. Policy.

## SURYA WORLD TECHNICAL CAMPUS (PUNJAB TECHNICAL UNIVERSITY)

### SCHOOL OF BUSINESS MANAGEMENT

**Degree:** Masters in Business Administration

**Duration:** 2 years

**Specialization**

- Finance
- HR
- Marketing

**Diploma:** Post Graduate Diploma in Management

**Duration:** 2 years

**Specialization**

- Finance & Entrepreneurship
- International Business
- Pharma Retail Management

### SCHOOL OF COMPUTER APPLICATIONS

**Degree:** Masters in Computer Applications

**Duration:** 3 years

### SCHOOL OF ENGINEERING & TECHNOLOGY

**Degree:** Bachelor of Technology

**Duration:** 4 years

**Courses offered:**

- Civil Engineering (CE)
- Computer & Communication Engineering (CCE)
- Computer Science Engineering (CSE)
- Construction Engineering & Management (CEM)
- Electrical Engineering (EE)
- Electronics & Communication Engineering (ECE)
- Information Technology (IT)
- Mechanical Engineering (ME)

**Degree:** Masters in Technology

**Duration:** 2 Years

**Courses offered:**

- Electronics & Communication Engineering (ECE)
- Mechanical Engineering (ME)

### SCHOOL OF HOTEL MANAGEMENT & CATERING TECHNOLOGY

**Degree:** Bachelor of Hotel Management & Catering Technology

**Duration:** 4 years

### SCHOOL OF ARCHITECTURE

**Degree:** Bachelor of Architecture

**Duration:** 5 years

### SCHOOL OF PHARMACY

**Degree:** Bachelor of Pharmacy

**Duration:** 4 years

## SURYA WORLD INSTITUTE OF BUSINESS MANAGEMENT (PUNJABI UNIVERSITY)

**Degree:** Masters in Business Administration

**Duration:** 2 years

**Specialization**

- Finance
- HR
- Marketing

**Degree:** Bachelor of Business Administration

**Duration:** 3 years

**Degree:** Bachelor of Commerce

**Duration:** 3 years

**Degree:** Bachelor of Computer Applications

**Duration:** 3 years

**Degree:** Bachelor of Science (Non- Medical)

**Duration:** 3 years

**Diploma:** Post Graduate Diploma in Computer Applications

**Duration:** 1 year

## TECHNICAL SCHOOL (PUNJAB SCHOOL EDUCATION BOARD)

**Certificate :** Senior Secondary +1 & +2 (Non - Medical)

**Duration :** 1 year



# Events



Meeting international standards & forging ties with Scotland's Colleges International



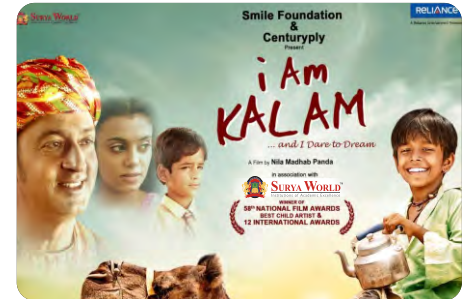
Surya World organized an awareness campaign on 'Save the Girl Child'



Mr Peter Lake from Sheffield Hallam University UK, interacting with the students



Jubilant players of Chandigarh Premier League, supported by Surya World



A still from Surya World sponsored children movie 'I Am Kalam'



Padamshri Nek Chand, Creator Director, Chandigarh Rock Garden at the launch of 'Green Drive'



A scene from the spell binding 'Krishna Raas' by students during the Annual Day



Surya Champs 2010 being felicitated; in all 8000 students participated in the competition



A CSR initiative by Surya World; blankets & woolens being distributed to underprivileged children



Shooting in progress at Surya World campus for ZEE's Punjabi channel ETC



Surya World contenders for PTU Inter-College Table Tennis Tournament

# Training & Placement



Familiarizing students with HR fraternity and industry needs at HR Summit



Guided tour to Mahindra & Mahindra for a seamless integration with industry



Students at the exposure visit and orientation training at Lafarge Pvt Ltd



Overwhelming response at the Job Fest organized at Surya World Campus

At Surya World, our robust instructional design is complimented by an established Training and Placement programme that endeavours to optimize individual learning and career development for each student, across all courses :

## Some of the specific initiatives in this direction are :

- Huge response to the very first Job Fest organized in the initial six months of the establishment of the institution
- Specially designed Executive Excellence Program and Finishing School for all students to develop employability skills
- National level events like HR Summit & Management Summit organized to facilitate seamless integration with industry
- Industry interfaces in the form of orientation trainings and exposure visits are a regular part of the curriculum
- Industry tie-ups with Surya Pharma, Viva Pharmacy, Raja Forgings & Gears Ltd, Toy Hotel, VTC Group, Surya Trade Wings & Surya Care
- Industry accredited programmes in association with Microsoft, Dell and Cisco
- 100% placement of the 1st batch of MBA students in top industries as well as in the group companies of Surya Corp

## Our esteemed recruiters include industry leaders like :



Spot Light ■ ■ ■

Surya World Institutions of Academic Excellence

**NORTH INDIA'S BEST PROVISIONED INTEGRATED CAMPUS****curriculum**Surya School of Business Management  
ranked**Best Promising Upcoming  
B-School in India**

– Business &amp; Management Chronicle 2011

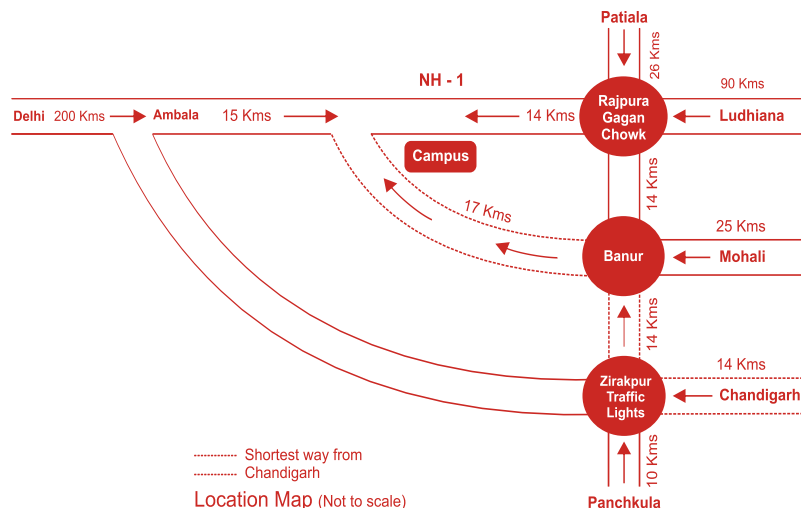
**Best Promising Upcoming B-Schools**

| Name of Institute                          | Website  | Location  |
|--|--|-----------|
| Surya School of Management                 | <a href="http://www.suryaworld.edu.in">www.suryaworld.edu.in</a> | Patiala   |
| Taxila Business School                     | <a href="http://www.taxila.in">www.taxila.in</a>                 | Jaipur    |
| Jindal Global Business School              | <a href="http://www.jgbs.in">www.jgbs.in</a>                     | Sonipath  |
| Vidya Institute of Business                | <a href="http://www.vsb.vidya.in">www.vsb.vidya.in</a>           | Meerut    |
| Durgapur Institute of Management & Science | <a href="http://www.dims.ac.in">www.dims.ac.in</a>               | Durgapur  |
| ERA Business School                        | <a href="http://www.ebs.ac.in">www.ebs.ac.in</a>                 | New Delhi |
| ATM Global Business School                 | <a href="http://www.atm.edu.in">www.atm.edu.in</a>               | New Delhi |

BEST B-SCHOOLS IN INDIA February 2011 | Business &amp; Management Chronicle 51

**Toll Free: 1800-2-666-000**  
**[www.suryaworld.edu.in](http://www.suryaworld.edu.in)**

Follow us on

**facebook** <http://www.facebook.com/suryaworlduniversity>**twitter** <http://twitter.com/suryaeducation>**SURYA WORLD™**  
Institutions of Academic Excellence**Corporate Office:** SCO 164-65, Sector 9-C, Madhya Marg, Chandigarh - 160 009, INDIA. Tel: +91 172 5005000 Fax: +91 172 5076000**Campus Address:** NH-1, Bapror, Near Shambhu Toll Plaza Teh. Rajpura, Near Chandigarh. Tel: +91-1762-666000 Email: [info@suryaworld.edu.in](mailto:info@suryaworld.edu.in)